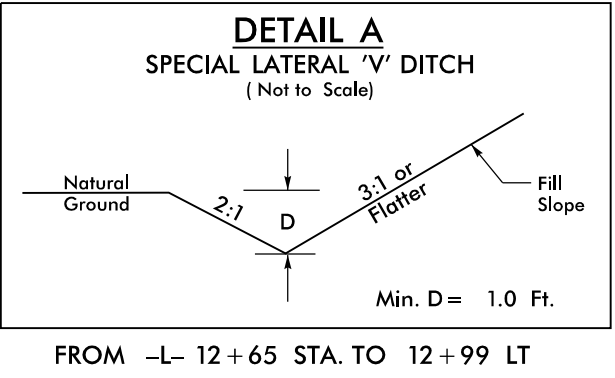
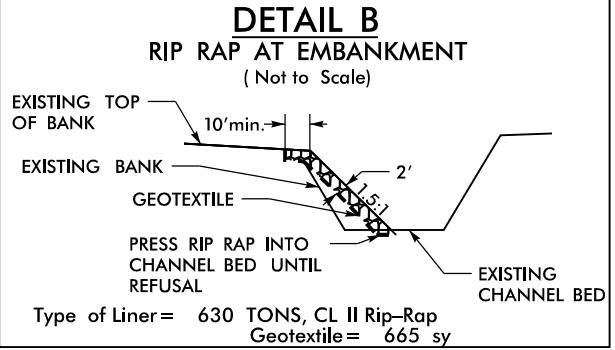
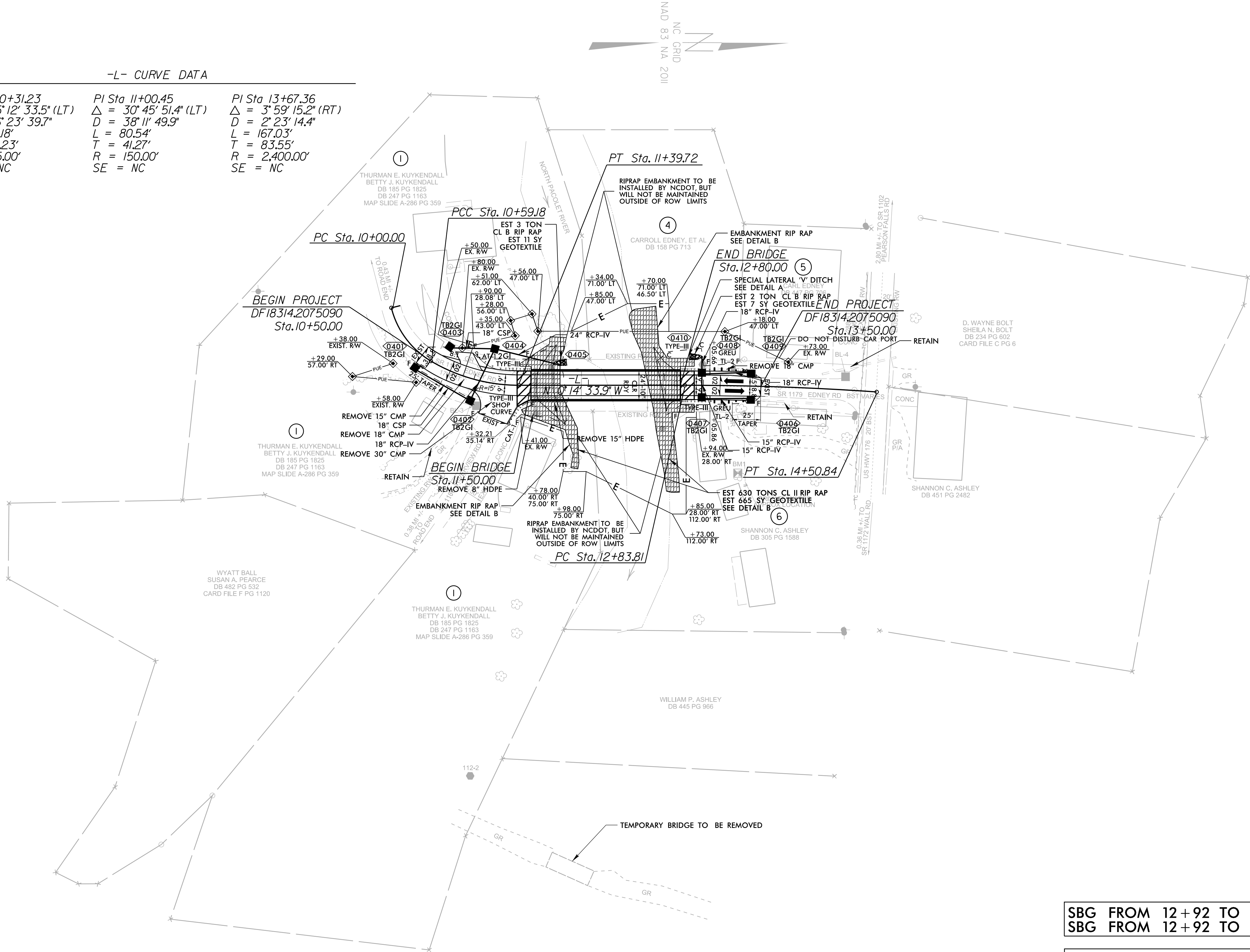


-L- CURVE DATA		
PI Sta 10+31.23 Δ = 45°12'33.5" (LT) D = 76°23'39.7" L = 59.18' T = 31.23' R = 75.00' SE = NC	PI Sta 11+00.45 Δ = 30°45'51.4" (LT) D = 38°11'49.9" L = 80.54' T = 41.27' R = 150.00' SE = NC	PI Sta 13+67.36 Δ = 3°59'15.2" (RT) D = 2°23'14.4" L = 167.03' T = 83.55' R = 2,400.00' SE = NC



SBG FROM 12+92 TO 13+06 -L- RT  
SBG FROM 12+92 TO 13+06 -L- LT

SEE SHEET 5 FOR PROFILE

FOR STRUCTURE PLANS, SEE SHEET S-1 THRU S-24

PROJECT REFERENCE NO. DF18314.2075090	SHEET NO. 4
ROADWAY DESIGN ENGINEER Matthew A. Popell 059503 10/6/2025	HYDRAULICS ENGINEER Alexander R. Alexander 049764 10/6/2025
DOCUMENT NOT CONSIDERED FINAL UNLESS ALL SIGNATURES COMPLETED	